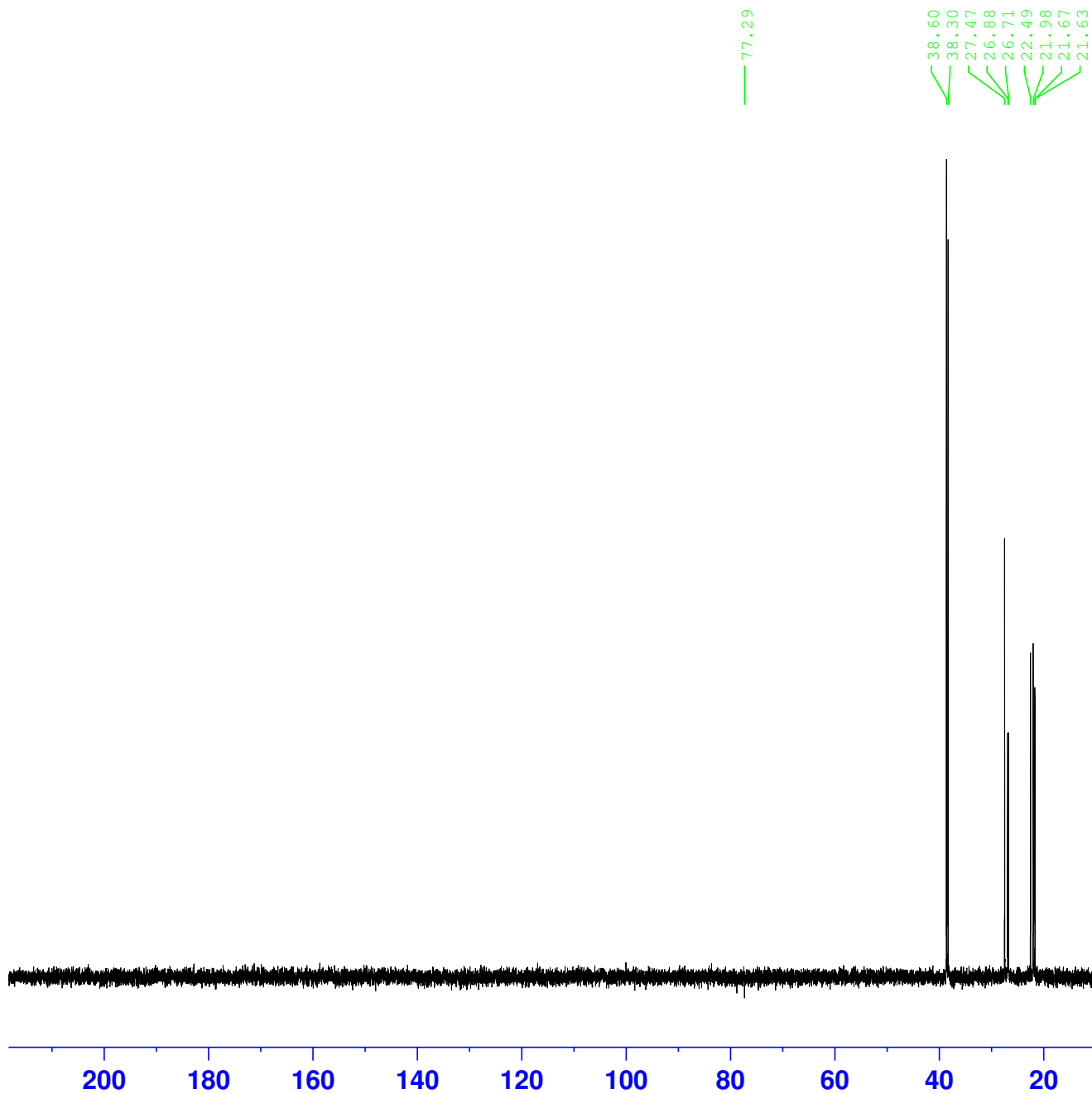


SC-15-83P



Current Data Parameters
NAME SC-15-83P
EXPNO 12
PROCNO 1

F2 - Acquisition Parameters
Date_ 20240419
Time 4.51 h
INSTRUM spect
PROBHD Z116098_0025 (
PULPROG deptsp135.b
TD 119044
SOLVENT CDCl3
NS 512
DS 4
SWH 23809.523 Hz
FIDRES 0.400012 Hz
AQ 2.4999239 sec
RG 208.37
DW 21.000 usec
DE 8.90 usec
TE 300.2 K
CNST2 145.0000000
D1 1.00000000 sec
D2 0.00344828 sec
D12 0.00002000 sec
TD0 1
SFO1 100.6228281 MHz
NUC1 13C
P1 10.10 usec
P13 2000.00 usec
PLW0 0 W
PLW1 72.95600128 W
SPNAM[5] Crp60comp.4
SPOAL5 0.500
SPOFFS5 0 Hz
SPW5 11.37100029 W
SFO2 400.1316005 MHz
NUC2 1H
CPDPRG[2] waltz64
P3 9.90 usec
P4 19.80 usec
PCPD2 90.00 usec
PLW2 16.15699959 W
PLW12 0.19550000 W

F2 - Processing parameters
SI 131072
SF 100.6127685 MHz
WDW EM
SSB 0
LB 1.00 Hz
GB 0
PC 1.40